



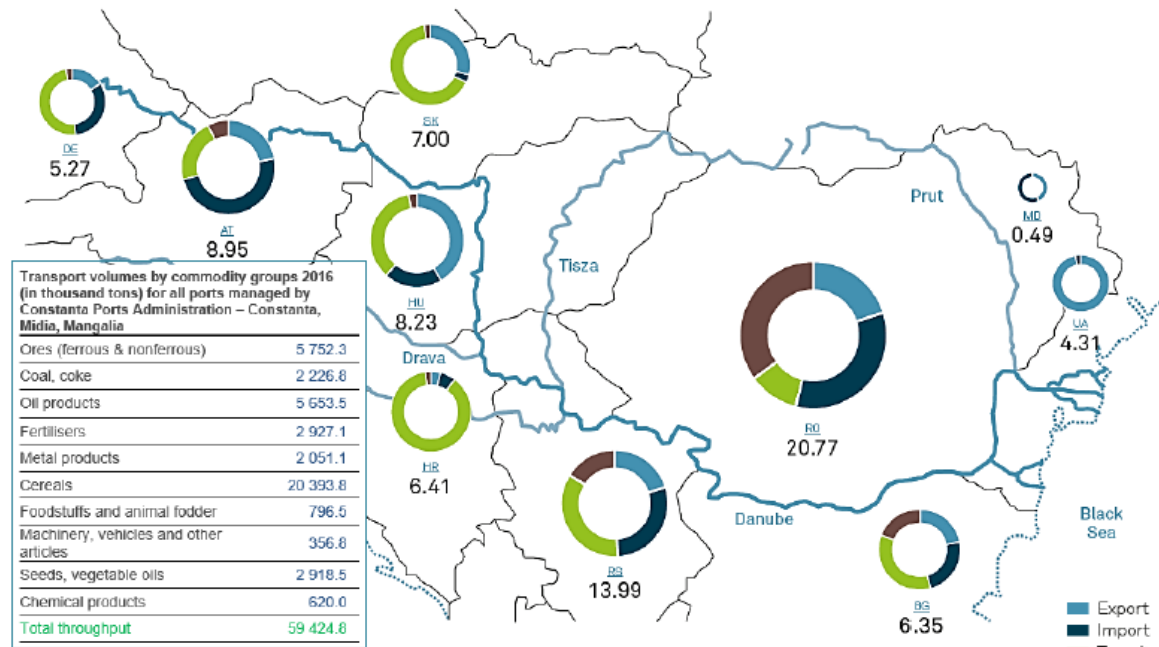
# Danube Commission

Manfred Seitz  
Budapest, January 2020



## THE DANUBE

2850 km long, flows through **10** countries  
 International navigation on **2414 km**  
 Catchment area **817,000 km<sup>2</sup>**, 120 tributaries



Inland Waterway Transport on Danube 2016 (© viadonau)

In millions of tons	DE	AT	SK	HU	HR	BA	RS	RO	BG	MD	UA
Export	0.82	2.00	2.09	3.41	0.22	0.20	2.79	4.13	1.39	0.21	4.22
Import	1.74	4.36	0.13	1.68	0.41	0.12	4.04	7.09	1.54	0.28	0.08
Transit	2.68	1.98	4.74	2.94	5.68	0.00	4.98	2.20	2.20	0.00	0.00
Domestic	0.15	0.81	0.04	0.20	0.10	0.00	2.28	7.35	1.22	0.00	0.01
<b>Total</b>	<b>5.27</b>	<b>8.95</b>	<b>7.00</b>	<b>8.23</b>	<b>6.41</b>	<b>0.32</b>	<b>13.99</b>	<b>20.77</b>	<b>6.35</b>	<b>0.49</b>	<b>4.31</b>



Donaukommission – Commission du Danube – Дунайская Комиссия – Danube Commission

Austria Bulgaria Croatia Germany Hungary Moldova Romania Russia Serbia Slovakia Ukraine

## Our Mission

- Implementing tasks mandated by the Belgrade Convention
- Introducing and improving high navigation standards, harmonization of rules in the field of inland navigation
- Supporting Member States in managing infrastructural challenges of the Danube waterway
- Intense dialogue with public and private stakeholders from the Danube States, the European Inland Navigation organizations, River Commissions and EU Institutions
- Facilitating and participating in EU projects of transnational and/or cross-border dimension



## Founding Document: Convention regarding the Regime of Navigation on the Danube (Belgrade, 1948)

**11 Member States** (1948, 1960, 1998): Austria, Bulgaria, Croatia, Germany, Hungary, Republic of Moldova, Serbia, Slovakia, Romania, Russia, Ukraine – **7 EU and 4 non-EU**

**10 Observer States** (2001, 2006, 2008, 2012, 2014): the Netherlands, Czech Republic, France, Turkey, Cyprus, Greece, Montenegro, Belgium, FYROM, Georgia

**International organizations as Observers & Partners:** IMO, ISRBC, BSEC, EC (DG MOVE), Mosel Commission, CCNR, ICPDR, UNECE, EDINNA, IVR, EFIP,





## Our Work refers to (1)



### Nautical issues

Basic Rules of Navigation (DFND), local rules of Navigation, Rules for river surveillance, RIS, professional qualifications for crew/personnel, professional certificates, fairway buoyage and marking systems, statistics



### Technical issues - Inland navigation vessels

Technical requirements for vessels and its equipment, certificates, radio-communication, utilization of radar stations contributions for updating ES-TRIN, security of navigation, statistics



### Hydro-technical and Hydro-meteorological issues

Consolidation of a Plan for major works, facilitate works to ensure and improve navigation, to conduct regulatory maintenance works, to prepare projects; river engineering works/structures, fairway maintenance, development and classification, provision of hydro-meteorological statistics, climate change impact



### Development of navigation

Elaboration of strategies/concepts, investments, safety of vessels, vocational training for vessel safety/security management system, projects development/implementation, interaction with scientific institutions, statistics



## Our Work refers to (2)



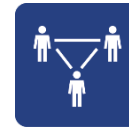
### Development of cargo and passenger transport, ports and logistics service

Monitoring and elimination of administrative barriers, integration of IWT into logistics chains, projects promoting regional and sub-regional cooperation, PA 1a) EUSDR, Joint Statement, statistics



### Environment

Transport of dangerous goods ADN activities, waste management, sanitary, veterinary and phytosanitary transport, pollutions prevention, ozone-depleting substances onboard vessels, statistics



### International cooperation/PR

Participation in international institutional cooperation, development, coordination and implementation of international & transnational projects, publications, communication section, archive/library, press work



### Legal and Financial issues

Elaboration of legal and organizational materials and documents, legal expertise, liaison with international organizations on unification, harmonization and mutual recognition of documents, budgeting



## TODAY'S CHALLENGES

- Shortcomings in fairway maintenance -> depth limitations
- Backlog in infrastructure investment
- Reduce administrative barriers
- Mitigate impact of climate change
- Modernize of Danube fleet -> towards zero emission
- Ensure skilled workforce and good working conditions
- Improve human capacity of waterway and port administrations
- Strengthen transnational/cross-border cooperation





Donaukommission – Commission du Danube – Дунайская Комиссия – Danube Commission

Austria Bulgaria Croatia Germany Hungary Moldova Romania Russia Serbia Slovakia Ukraine

# Addressing the challenges

- Eliminate the critical sections of shallow water which reduce efficiency and safety of Danube transportation,
- Ensure minimum standards of waterway maintenance following the international agreements,
- Invest into infrastructure of river- and seaports in order to turn them into prospering centers of economic development and in hubs for multimodal transport,
- Improve the port hinterland connections (road, rail, shortsea shipping) in order enable efficient transshipment operations,
- Enhance traffic and passenger volumes on the Danube waterway contributing to a more balanced and more sustainable transport system of the Danube region,
- Improve environmental performance of Danube navigation by means of fleet modernization & optimized waste management,
- Implement cross-border waterway infrastructure projects which improve navigability and at the same time the environmental functioning of the addressed Danube sections,
- Eliminate and/or reduce the administrative barriers for the transport of goods and passengers on the Danube waterway,
- Ensure availability of highly skilled labor forces working on board of vessels, in ports and in others areas of the waterborne logistics system,
- Develop strategies and actions which mitigate the impact of climate change on Danube transportation
- Harmonize the regulatory framework for the transport of goods and passengers in the Danube region in line with the European and international rules as part of a more unified and efficient European waterway system.



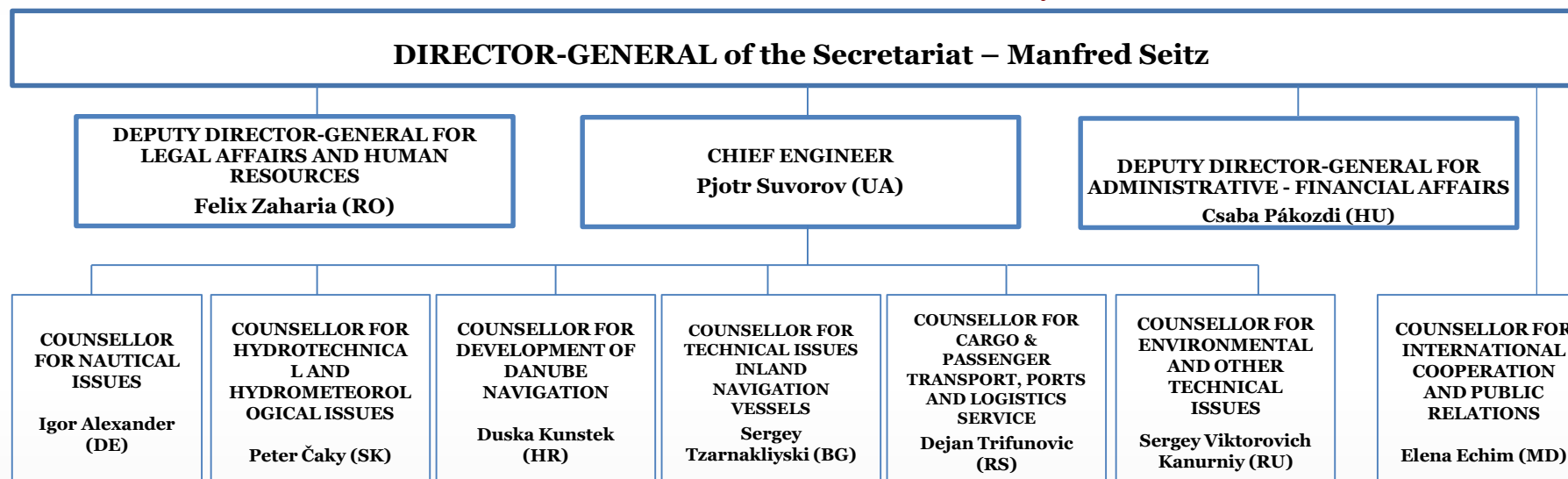


# Structure of the DC and its Secretariat

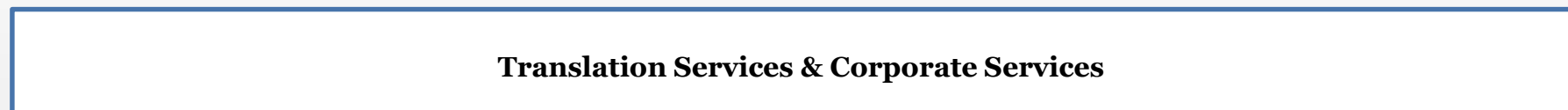
## STATE LEVEL (11 member states)



## PROFESSIONAL LEVEL (11 envoys)



## ORGANISATIONAL LEVEL (19 employees)



**Thank you for  
your attention!**

**Secretariat of the  
Danube Commission**

[secretariat@danubecom-  
intern.org](mailto:secretariat@danubecom-intern.org)

H-1068 Budapest  
Benczúr utca 25

www.  
danubecommission.org

